

McAlester Ward Redistricting

Adjust the current ward boundaries to conform to the criteria for redistricting as stated in the McAlester City Charter, using 2010 U.S. Bureau of Census block population data

Redistricting Criteria

Listed in Priority Order per City Charter

- 1. Wards shall be equal in population except where deviations result from application of the provisions hereinafter set forth, but no deviation may exceed 5% of the average population of a City Council ward, calculated by dividing the total city population according to the 2010 census by six (6).
- 2. Wards shall consist of contiguous territory unless such is physically impossible given City Boundaries.
- 3. The aggregate length of all district boundaries shall be as short as possible.

These Criteria have been met

Redistricting Criteria Continued

- 4. Ward boundaries will be set in alleyways or closed alleyways whenever possible with the aim of placing houses across the street from each other in the same ward.
- ***This Criterion could not be implemented. Alleyways split individual census blocks, each of which have a single population value reported by the Census Bureau. Alternatively, where practicable, ward boundaries were placed along the railroad and major thoroughfares.***

2000 VERSUS 2010

Census Population 2000=17,783

Census Population 2010=18,383

Census Data includes prison population

The 2000 ward population adjustment excluded the prison population, but the prison population was required to be included in 2010's adjustment.

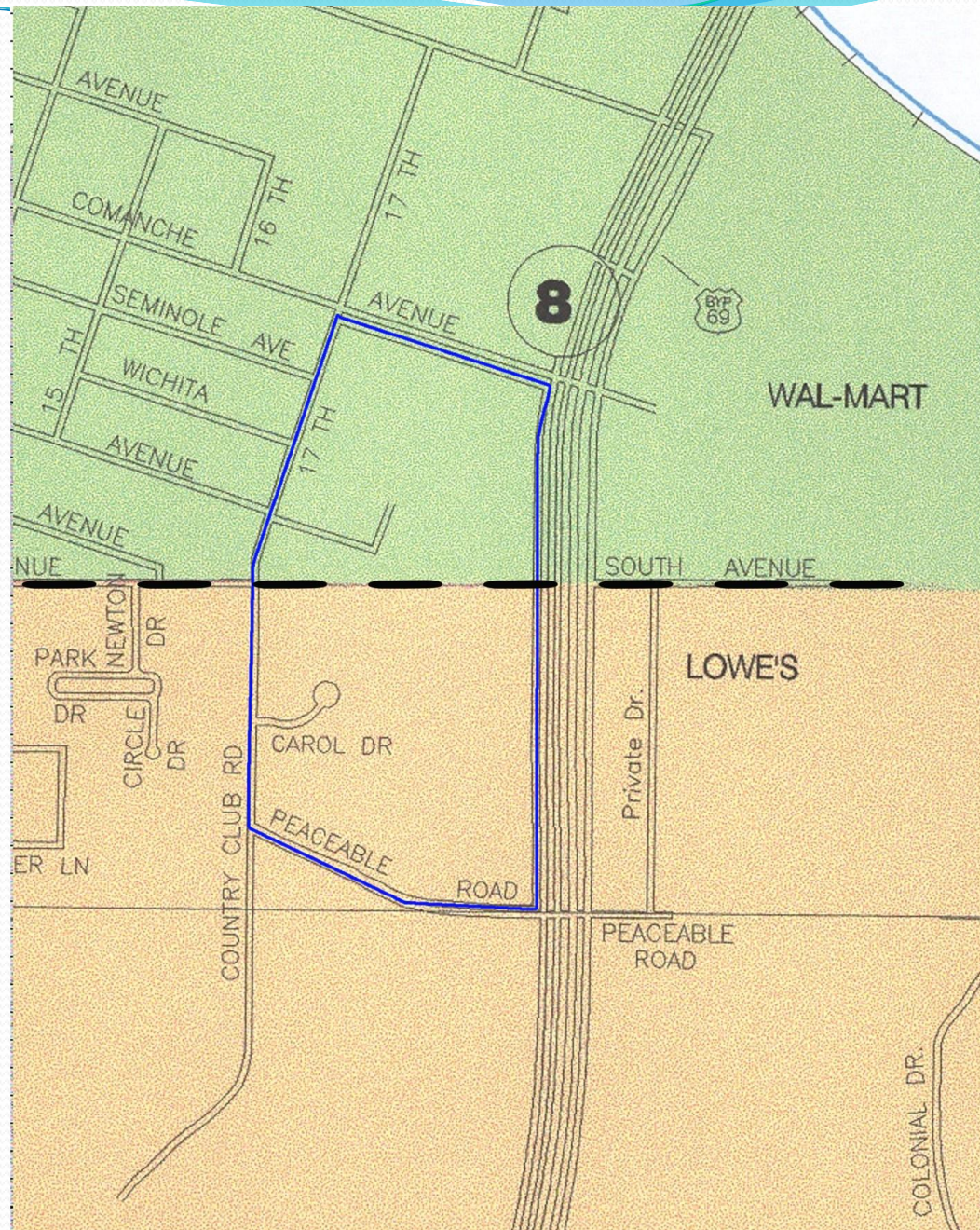
Prison population is **1,755**

WARD & CENSUS BLOCK BOUNDARY CONFLICT

Blue boundary defines
the census boundary.

Dashed line defines the
ward boundary
between Wards 6 & 2.

The population of
census block (104) was
divided equally (52 in
each) between Wards 6
and 2.



Ward 1 – West boundary moves from railroad track to D Street. South boundary moves from Washington to Carl Albert.

Ward 2 – No change.

Ward 3 – North boundary moves from railroad track to Madison.

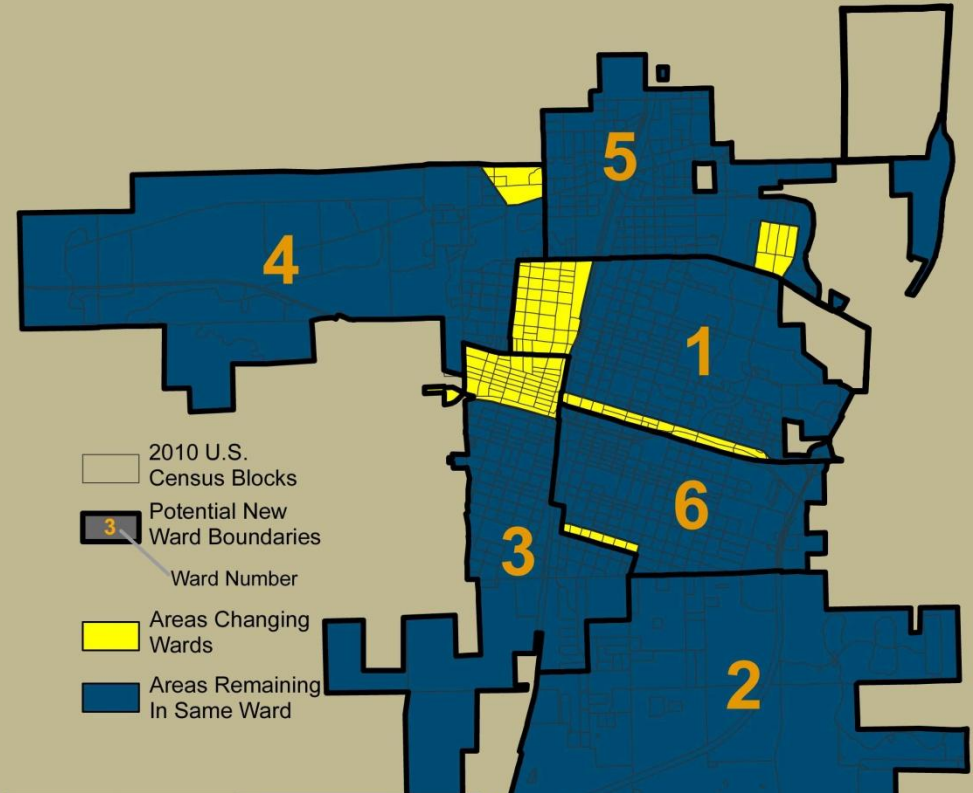
Ward 4 – East border with Ward 5 is Hickory. East border with Ward 1 is D Street. The south border with Ward 3 is Madison.

Ward 5 - West border is Hickory. South border is Electric.

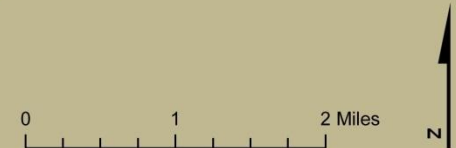
Ward 6 – South border from 9th to 2nd moved south one block to Seneca. North boundary is Carl Albert.

BOUNDARIES COMPLY WITH ALL CRITERIA

Areas Changing Wards Potential Ward Boundaries

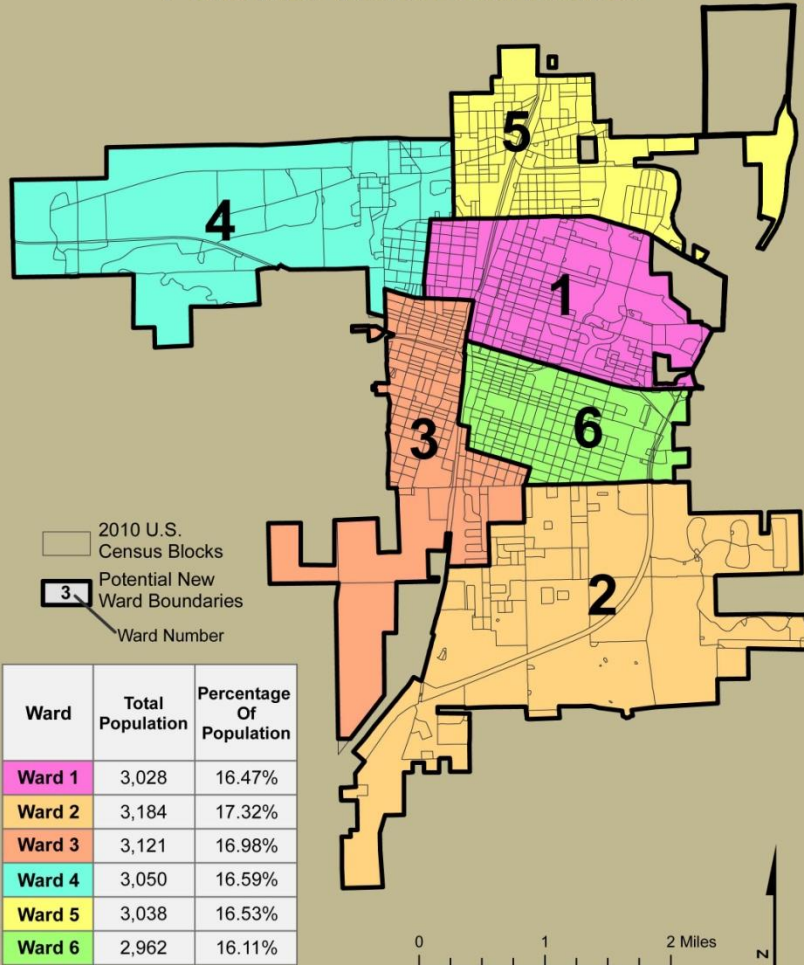


| Ward | Total Population | Population Added to Ward | Population Subtracted From Ward |
|--------|------------------|--------------------------|---------------------------------|
| Ward 1 | 3,028 | 758 | 333 |
| Ward 2 | 3,184 | None | None |
| Ward 3 | 3,121 | 848 | 139 |
| Ward 4 | 3,050 | 50 | 1,526 |
| Ward 5 | 3,038 | 333 | 50 |
| Ward 6 | 2,962 | 139 | 80 |

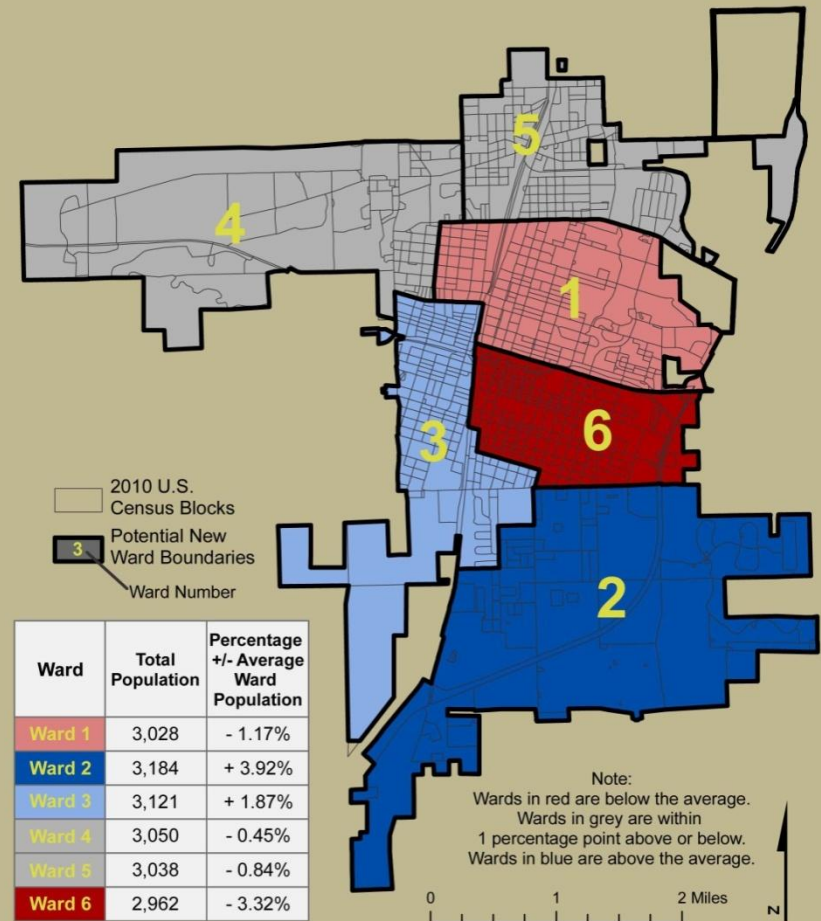


Ward % of City Population and % Variance to Average Ward Population

General Ward Map Potential Ward Boundaries



Average Population Comparison Potential Ward Boundaries



REDISTRICTING SUMMARY

- The requirement to include the prison population in the ward redistricting was the primary issue that had to be addressed by the commission in meeting the McAlester City Charter's Ward Plan Criteria.
- The commission considered five different options presented by East Central University to meet the McAlester City Charter's Ward Plan Criteria.
- One of the options presented would have resulted in major changes in ward boundaries and displacement of approximately 50% of the population.
- The commission concluded that this was too drastic a change and chose the boundaries presented.

Proposed 2010 Ward Boundaries

